



Submersible Effluent / Waste Pump

Type DVS

APPLICATIONS

- Ideal for waste water application containing soft or fibrous solids
- Industrial waste water drainage
- Septic effluent
- Other drainage operation

FEATURES/BENEFITS

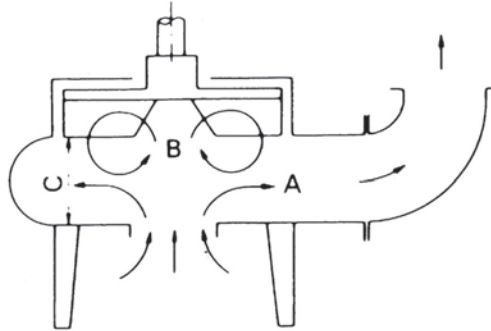
- Air filled, Class F insulated, heavy duty motor, dissipates heat easily, operates cooler with higher efficiencies; longer service life with lower operating costs.
- Built-in motor protection with autocut, protects motor against overheating, single phasing, and no load; saves money on costly motor replacement.
- Molded cable prevents capillary action; reduces maintenance costs.
- Large solids handling capabilities prevents clogging.
- Semi-open vortex type recessed impeller; vortex action prevents clogging and handles stringy material better, high reliability, and lowers maintenance costs.
- High quality stainless steel shaft; provides high tensile strength, corrosion resistance, longer life, and lower maintenance costs.
- Double mechanical seals-silicon carbide lower seals, carbon/ceramic upper - hard faced upper and lower seals operate in an oil bath; providing longer service life and lower maintenance costs.
- Available for Q.D.C connection installations provides ease of maintenance for sump type installations.



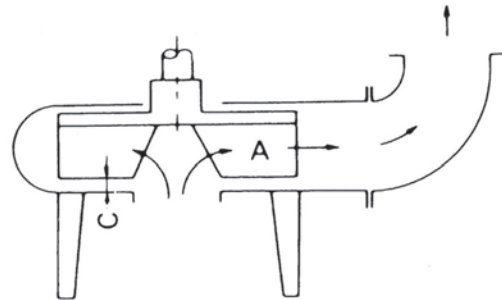
The DVS pump has a unique semi-vortex construction of EBARA's own design. This pump is as efficient as conventional non-clog pump which uses the centrifugal force of eddy "A" (see below) to pump liquids. As you can see, any foreign matter sucked into the pump must pass the impeller, which can result in trouble caused by clinging grass and clogged stones.

With the vortex pump, foreign matter is expelled by the force of eddy "B" which is formed in the wide space between the impeller and the suction cover ("C"). There is less likelihood of clogging.

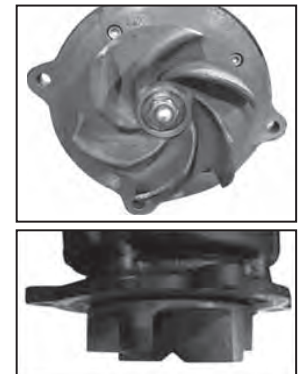
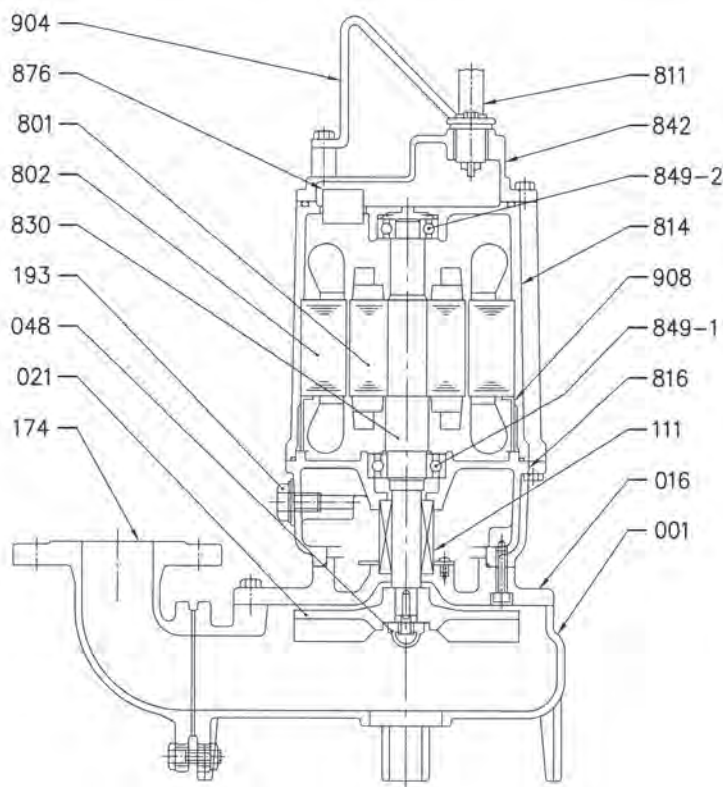
EBARA semi - vortex pump



Conventional non - clog pump



SECTIONAL VIEW



Impeller of DVS

POS	PART NAME	MATERIAL	N° FOR UNIT
001	Casing	Cast Iron EN-GHJL-200-EN 1561	1
016	Mechanical Seal Cover	Cast Iron EN-GHJL-200-EN 1561	1
021	Impeller	Cast Iron EN-GHJL-200-EN 1561	1
048	Impeller Nut	EN 1.4301 (AISI304)	1
111	Mechanical Seal	-	1
174	Discharge Bend	Cast Iron EN-GHJL-200-EN 1561	1
193	Oil Plug	NBR/EN 1.4301 (AISI304)	1
801	Rotor	Silicon Steel Sheet	1
802	Stator	Silicon Steel Sheet	1
811	Cable	Submersible type	1

POS	PART NAME	MATERIAL	N° FOR UNIT
814	Motor Frame	Cast Iron EN-GHJL-200-EN 1561	1
816	Power Side Bracket	Cast Iron EN-GHJL-200-EN 1561	1
830	Shaft	EN-GHJL-200-EN 1561	1
842	Motor Cover	Cast Iron EN-GHJL-200-EN 1561	1
849-1	Ball Bearing		1
849-2	Ball Bearing		1
876	Protector		1
904	Lifting Hanger	Stainless Steel	1
908	Spacer	Steel	

DIMENSION

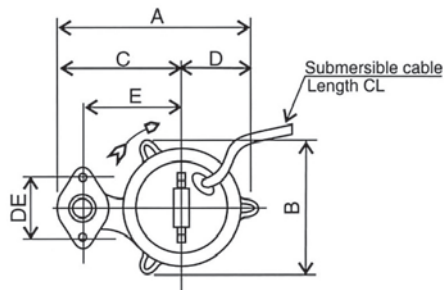


Figure 1

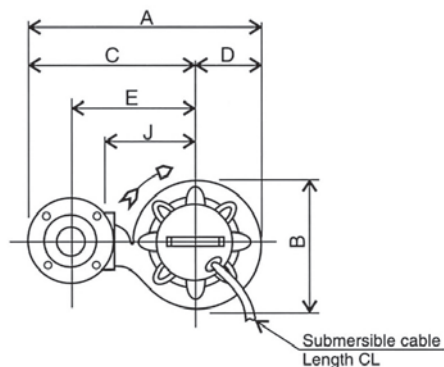
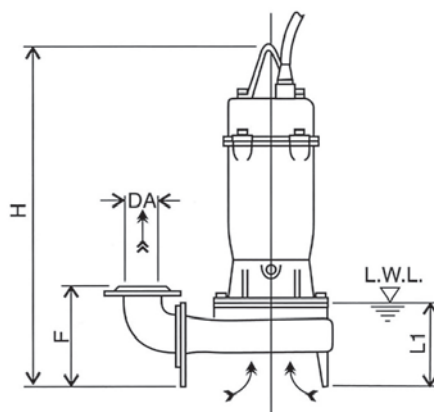
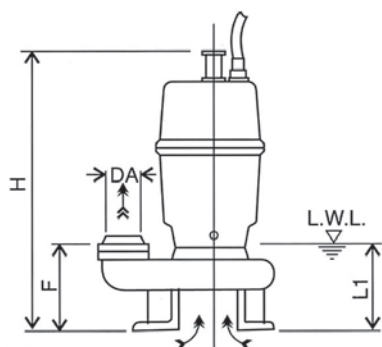
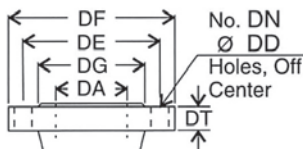


Figure 2



Note:

- 1/. L.W.L (Low Water Level) Is limited to 10 minutes operation at low water level.
- 2/. Is limited to 30 minutes operation with water level below top of motor.



Discharge Flange Dimensions (JIS 10kgf/cm)

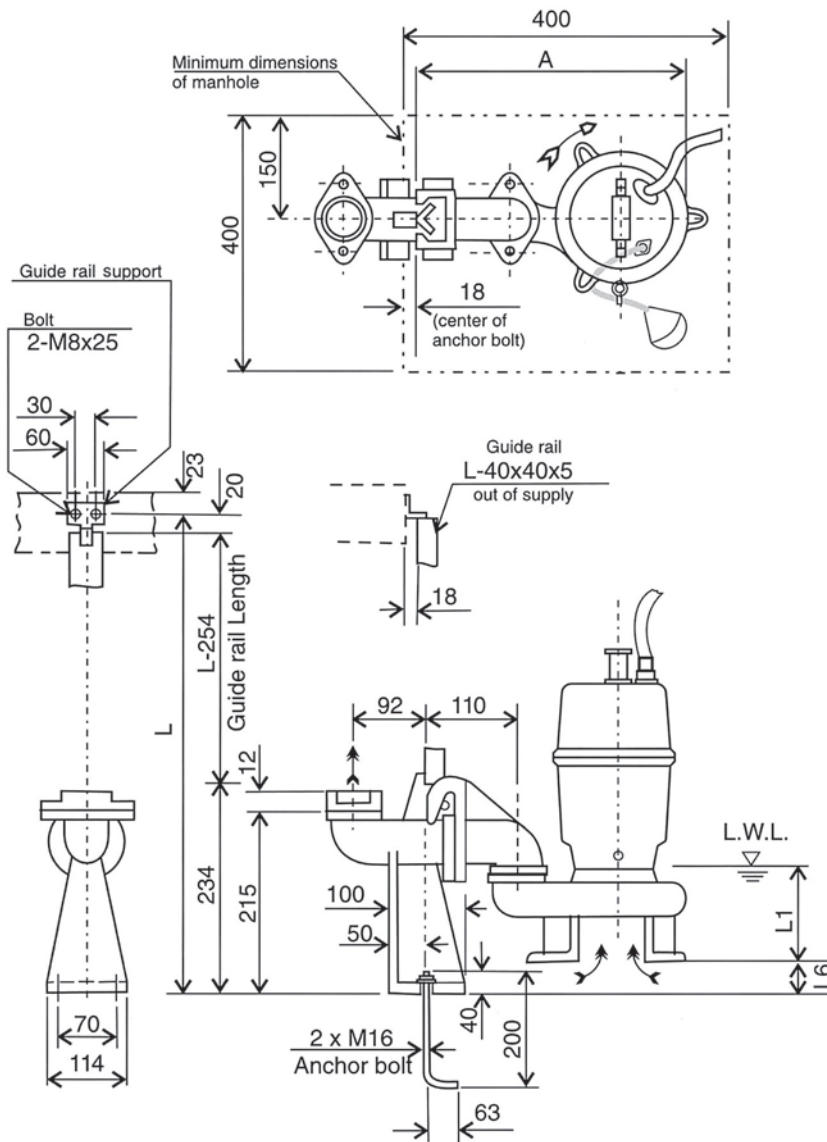
DA	DE	DF	DG	DT	DN	DD
65	140	175	116	18	4	15
80	150	185	126	18	8	15

Size	Model	Fig.	Output KW	Phase	DA	A	B	C	D	E	F	H	DE	J	L1	CL (m)	Weight kg
50	50 DVS 5.4S	1	0.4	1	PT2"	239	160	148	91	110	82	435	96	-	105	6	18
	50 DVS 5.4T	1	0.4	3	PT2"	239	160	148	91	110	82	398	96	-	105	6	17
	50 DVS 5.75S	1	0.75	1	PT2"	249	171	163	86	125	82	497	96	-	105	6	26
	50 DVS 5.75T	1	0.75	3	PT2"	249	171	163	86	125	82	397	96	-	105	6	19
	50 DVS 51.5	1	1.5	3	PT2"	249	171	163	86	125	82	439	96	-	105	6	27
	50 DVS 55.5	2	5.5	3	50	466	265	333	133	255	165	712	120	200	177	10	76
	50 DVS 57.5	2	7.5	3	50	466	265	333	133	255	165	712	120	200	177	10	83
65	65 DVS 5.75T	2	0.75	3	65	396	195	298	98	210	178	467	-	145	125	6	25
	65 DVS 51.5	2	1.5	3	65	396	195	298	98	210	178	519	-	145	125	6	34
	65 DVS 52.2	2	2.2	3	65	427	227	313	114	225	201	643	-	160	155	10	50
	65 DVS 53.7	2	3.7	3	65	427	227	313	114	225	201	643	-	160	155	10	59
	65 DVS 55.5	2	5.5	3	65	506	265	373	133	285	183	712	140	220	177	10	77
	65 DVS 57.5	2	7.5	3	65	506	265	373	133	285	183	712	140	220	177	10	84
80	80 DVS 5.75T	2	0.75	3	80	411	195	313	98	220	183	467	-	145	125	6	26
	80 DVS 51.5	2	1.5	3	80	411	195	313	98	220	183	519	-	145	125	6	35
	80 DVS 52.2	2	2.2	3	80	442	227	328	114	235	206	643	-	160	155	10	51
	80 DVS 53.7	2	3.7	3	80	442	227	328	114	235	206	643	-	160	155	10	60
	80 DVS 55.7	2	5.7	3	80	521	265	388	133	295	188	712	150	220	177	10	78
	80 DVS 53.7	2	3.7	3	80	442	227	328	114	235	206	643	150	220	177	10	85

Units: mm unless otherwise specified

DIMENSION WITH QDC

Applicable Models - 50 DVS



Note:

1/. For detailed dimensions of the pumps, refer to separate dimension data sheets.

2/. The companion flange supplied with the pump are used with the QDC.

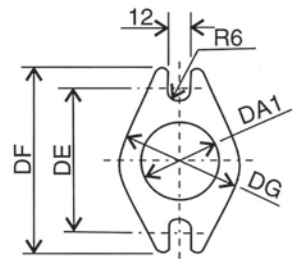
3/. The weight in dimension tables refers only to the weight of the QDC.

4/. Standard accessories supplied with QDC include:-

- Connector body with foundation bolts
- Guide rail support
- Adaptor Flange

Guide rail is not supplied.

Discharge Flange

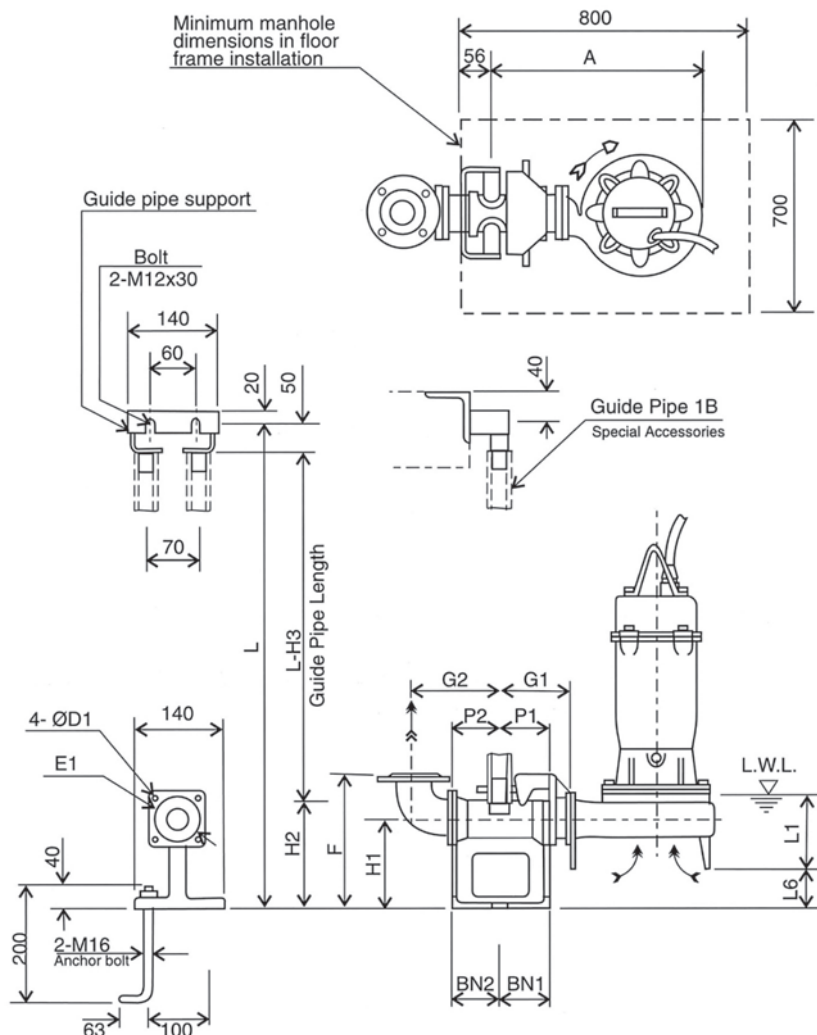


Pump Model	A	DA1	DE	DF	DG	L1	L6	QDC Model	QDC Weight kg
50 DVS 5.4S	311	50	96	114	76	105	58	LS50	9
50 DVS 5.75S	321	50	96	114	76	105	58	LS50	9
50 DVS 5.4T	311	50	96	114	76	105	58	LS50	9
50 DVS 5.75T	321	50	96	114	76	105	58	LS50	9
50 DVS 51.5	321	50	96	114	76	105	58	LS50	9
50 DVS 55.5	448	50	120	155	96	177	65	LS50	9
50DVS 57.5	448	50	120	155	96	177	65	LS50	9

Units: mm unless otherwise specified

DIMENSION WITH QDC

Applicable Models - 65 & 80 DVS



Note:

1/. For detailed dimensions of the pumps, refer to separate dimension data sheets.

2/. The discharge bend and companion flange supplied with the pump are used with the QDC.

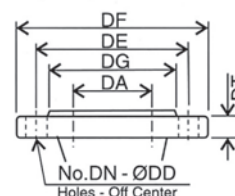
3/. The weight in dimension tables refers only to the weight of the QDC.

4/. Standard accessories supplied with QDC include:-

- Connector body with foundation bolts.
- Guide pipe support
- Sliding Glide
- Adaptor Flange

Guide pipe is not supplied.

Discharge Flange
(JIS 10kg/cms)



DA	DE	DF	DG	DT	DN	DD
65	140	175	116	18	4	15
80	150	185	126	18	8	15

Pump Model	A	P1	P2	G1	G2	F	H1	H2	H3	L1	L6	BN1	BN2	D1	E1	QDC Model	QDC Weight kg
65 DVS 5.75T	363	75	95	120	160	250	145	190	240	125	72	75	95	12	140	LM65	14
65 DVS 51.5	363	75	95	120	160	250	145	190	240	125	72	75	95	12	140	LM65	14
65 DVS 52.2	394	75	95	120	160	250	145	190	240	155	49	75	95	12	140	LM65	14
65 DVS 53.7	394	75	95	120	160	250	145	190	240	155	49	75	95	12	140	LM65	14
65 DVS 55.5	538	105	125	185	190	315	210	240	310	177	133	100	40	12	140	LM65	14
65 DVS 57.5	538	105	125	185	190	315	210	240	310	177	133	100	40	12	140	LM65	14
80 DVS 5.75T	363	75	95	120	170	255	145	190	240	125	72	75	95	12	140	LM65	14
80 DVS 51.5	363	75	95	120	170	255	145	190	240	125	72	75	95	12	140	LM65	14
80 DVS 52.2	394	75	95	120	170	255	145	190	240	155	49	75	95	12	140	LM65	14
80 DVS 53.7	394	75	95	120	170	255	145	190	240	155	49	75	95	12	140	LM65	14
80 DVS 55.5	538	105	125	185	200	320	210	240	310	177	133	100	40	12	140	LM65	14
80 DVS 57.5	538	105	125	185	200	320	210	240	310	177	133	100	40	12	140	LM65	14

Units: mm unless otherwise specified

* Dimensional details are provided for reference only.

* All specifications are subject to change without prior notice.



EBARA Pumps Malaysia Sdn Bhd
 6, Jalan TP3, UEP Subang Jaya Industrial Park,
 47620 Subang Jaya, Selangor, Malaysia.
 Tel : 03-8023 6622 Fax : 03-8023 9355
 Email : sales.epm@ebaracom
 Website : www.ebaracom.my



Authorized dealer: